

## Reference : C-R28S29 8F+TC

The Fixolite box is a 6 m long prefabricated lintel box designed to receive a closure (roller shutter, BSO, etc.). The box consists of an inverted U-shaped, fire-retardant expanded polystyrene (30 kg/m<sup>3</sup> density) shell reinforced with steel mesh. The side walls are fitted with aluminum rails.

### Reinforced model box

Reinforced with 3 mm steel brackets every 1.20 m, intended for openings wider than 1.60 m.

Certified by a Technical Approval from CSTB.

Maximum length: 450 cm structural opening (474 cm overall).

Packaging: pack of 28 (or 24) boxes, 6 ml each.

Type	R28S29
Outer rail ref.	8F
Inner rail ref.	28FR
Color	Grey graphitized polystyrene
Compatible cheek	J-28
Certification	<a href="#">CSTB 16-11-634 (translated) [PDF]</a>
Thermal conductivity	U = 0.82 W/m <sup>2</sup> .K
Thermal resistance*	R = 1.22 m <sup>2</sup> .K/W

(\*) R: thermal resistance (m<sup>2</sup>.K/W) taking into account a  $\lambda$  coefficient of 0.0374 W/m.K after application of a safety coefficient of 1.15.

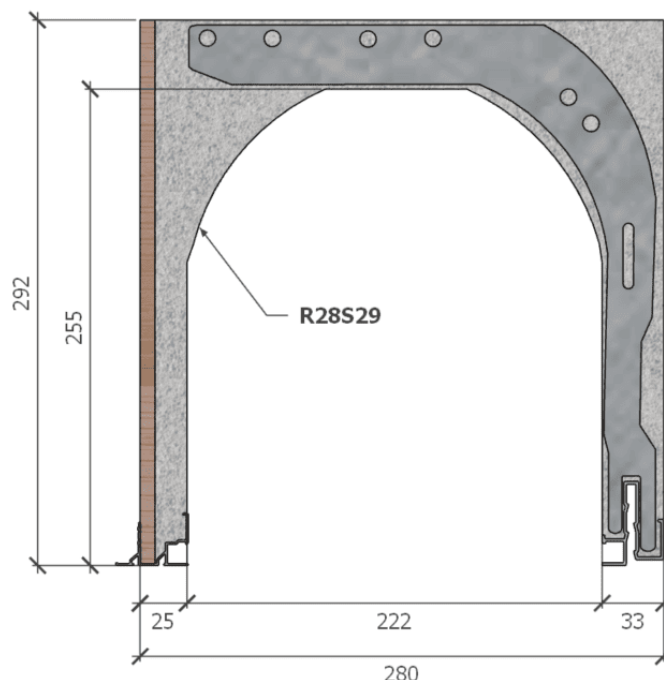
Weight	6.85 kg/m
Reaction to fire	class E (EN ISO 11925-2/EN 13 501)
Air permeability	c*3 class
Acoustic perf. (Dn <sub>W</sub> )	55 dB

### Box dimensions

Width	280 mm
Height	292 mm
Tunnel	222 mm
External side	33 mm
Internal side	25 mm

### Components

Brick (terracotta)	4.06 kg/m
Aluminium (recycl. 85%)	0.95 kg/m
Steel (recycl. 96.5%)	1.02 kg/m
Polystyrene (recycl. 10%)	0.82 kg/m
<b>Total</b>	<b>6.85 kg/m</b>



**Option brackets and ligatures [PDF]:** in accordance with the technical advice of the CSTB, the reinforced boxes will be ligatures to the chain and fixed to the upper crosspiece using brackets. Brackets and ligatures are available separately or integrated into the box during production.

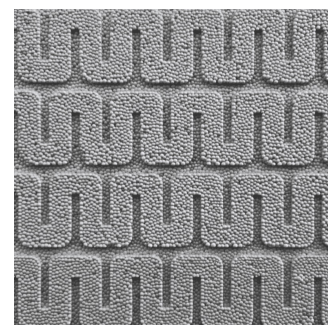
**Corner option [PDF]:** the rails 28FR allow the addition of the sealing and fixing corner with the joinery. These 40x30 mm notched corners are available in packs of 100 pieces or inserted in the box.

### Sides finishing

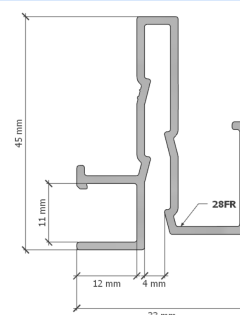
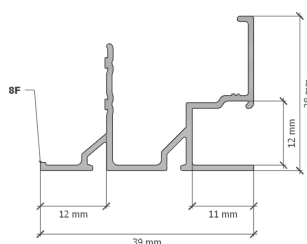
**External side**  
Brick (terracotta)



**Internal side**  
Ribbed polystyrene



### Rail diagram



**English**



**Français**



**2025-11 • Fixolite Disclaimer.** The information provided in this technical sheet is for reference only and without warranty of accuracy or completeness. Fixolite disclaims any liability for errors, omissions, or consequences related to the use of this information. Specifications are subject to change without notice.

Check out our [installation instructions \[PDF\]](#) and [general documentation](#)